



BI-WEEKLY PAYMENT OPTION

A Bi-weekly Payment program allows you to customize the timing of your loan or lease payments to better match your actual cash flow.

Instead of making monthly payments, you will make a half payment every two weeks. This payment pattern will generate additional equity over time and accelerate the payoff of your loan or lease.

PROGRAM BENEFITS

- No up-front costs
- Payoff your loan faster
- Equity acceleration
- No more writing or mailing checks
- Minimize the potential impact of vehicle depreciation
- Simplify your finances

PETE'S RV CENTER
4016 WILLISTON ROAD
SO. BURLINGTON, VT 05403

EASYCARE[®]

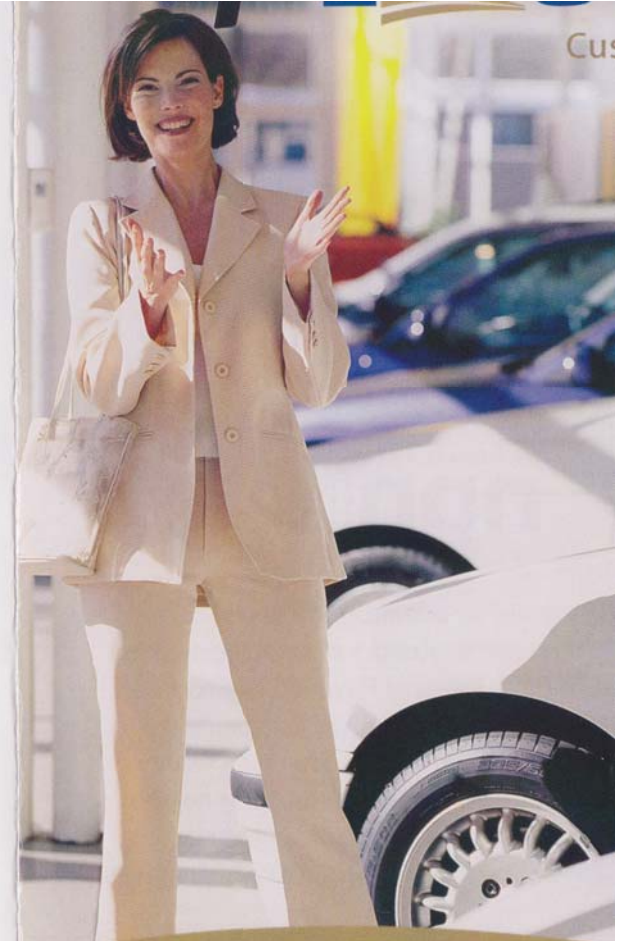
EasyCare has partnered with National Payment Network as the administrator of your account.

NATIONAL PAYMENT
nnpINC
NETWORK

Who do I contact with questions
about my account?

1.888.469.0176
support@nationalpayment.net

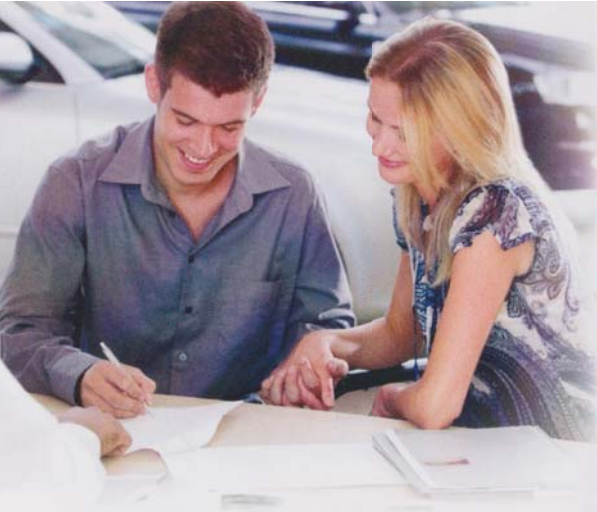
This brochure is a summary of the Bi-weekly Payment program. Refer to the plan's Bi-weekly Plan Agreement for further details, benefit descriptions, conditions, disclosures and limitations.



**Bi-weekly payments
can help you:**

- Pay off your loan faster
- Match payments to paychecks
- Simplify your budgeting
- Build equity faster!

Ask your dealership how to enroll



NATIONAL PAYMENT
nPN INC
 NETWORK

The CustomPay administrator is one of the leading administrators of loan acceleration plans. To date, National Payment Network has successfully processed payments for approximately \$4 billion in consumer loan values. Bi-weekly Payment programs have helped thousands of customers better manage their finances and achieve their long-term financial goals.

CustomPay partners with some of the best financial institutions in the nation. These relationships allow us to offer the most secure, efficient and reliable payment processing services available.

Processing partners professionally control the ACH process from initiation to settlement. Funds are held and processed individually, giving full FDIC protection of your account. You can rest easy knowing that your payments are processed securely and accurately for the duration of your loan.

EASYCARE®

CustomPay

ESTIMATED EXAMPLE 1

\$30,000 loan - 12% APR - 5 Year

Loan Terms	Bi-weekly Payments	Monthly Payments
Payment amount:	\$335.34	\$670.67
Time to repay:	55 Months	60 Months
Eliminated months of loan:	5 Months	0 Months
Increased equity in 3 years	\$1,600	\$0
Increased equity at payoff	\$3,000	\$0

ESTIMATED EXAMPLE 2

\$25,000 loan - 10% APR - 6 Years

Loan Terms	Bi-weekly Payments	Monthly Payments
Payment amount:	\$232.54	\$465.08
Time to repay:	66 Months	72 Months
Eliminated months of loan:	6 Months	0 Months
Increased equity in 3 years	\$1,000	\$0
Increased equity at payoff	\$2,300	\$0

These examples are for illustrative purposes only. This brochure is a summary of the Bi-weekly Payment program. Refer to the plan's Bi-weekly Plan Agreement for further details, benefit descriptions, conditions, disclosures and limitations.

FREQUENTLY ASKED QUESTIONS

- Q: What if I plan to sell or trade in my car early?**
A: This payment option helps you reduce the payoff of your loan or lease faster; improving your financial position when you trade-in or sell your vehicle.
- Q: Are there additional benefits?**
A: You can simplify your finances and budgeting with convenient, more frequent payments. Even better, all bi-weekly payments are electronic so you no longer have to write or mail checks.
- Q: Is there a cost to enroll?**
A: Yes, but there is no up-front cost to you. All program fees are simply deducted from the prepayments made while on the program.
- Q: How does paying bi-weekly pay off my loan sooner?**
A: By deducting half of your monthly payment every two weeks, you will gradually make extra payments on your vehicle. As a result, your loan or lease is typically paid off six or more months faster. Simply ask the dealership for your own detailed analysis.
- Q: Is it safe?**
A: Absolutely. EasyCare CustomPay partners with leading financial institutions and employs the industry's best technology and banking practices to ensure the security of your payments. You can feel secure knowing that your bi-weekly plan is handled with professionalism and accuracy.
- Q: What happens after I enroll?**
A: Once enrolled, you will receive a welcome letter in the mail confirming your enrollment. If you ever need to make any changes or cancel the plan for any reason, simply contact EasyCare CustomPay and a friendly customer support representative will assist you.